

Scandinavia

A W I N D O W T O T H E W O R L D

Finally, it's all about you.
Your time, your content, your friends.
Your window to the world.

- + 55" Android™-based Edge LED Backlight Television
- + Get connected and surf the Internet
- + Your favorite applications ready to go
- + Coming app-store with a world of Apps
- + Your media, information and friends - at your fingertips
- + Wireless keyboard for internet surf, chat and more!
- + Ultra-thin LED technology
- + Stunning image capability
- + Built-in stereo sound system



Web-browser



Media-player



Youtube



Facebook



Twitter



There was a time, when we were not yet connected.

When we didn't know. When we couldn't choose.

We were isolated then. Islands, floating about, without interconnectivity. It was a lonely time. It was boring.

One day, all that changed. Suddenly, we spoke! Suddenly, we saw, showed and we shared.

That day is today. Welcome to open your window to the world.



Technical information

TV

- + 55" Full-HD Backlight LED (1920*1080)
- + PAL/SECAM, DVB-T, MPEG4, H.264 HD
- + Common Interface
- + 100/120 Hz Technology

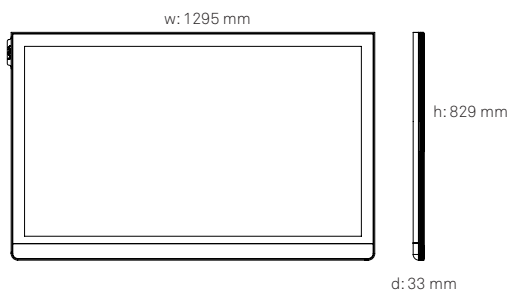
Android TV

- + Built-in Android™ platform
- + Out of the box applications: Facebook, Youtube, Internet browser, Webmail, Google Maps...
- + Video-formats: MPEG4, H.264 HD (720p)
- + Audio-formats: MPEG-1 layers 1,2 and 3(MP3)
- + OS: Android 1,5 Cupcake

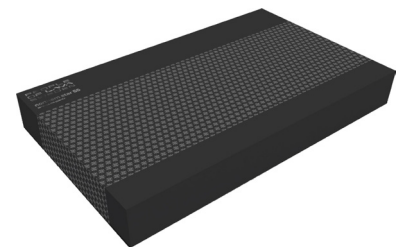
Hardware

- + Processor: S0PC100 (Cortex A8) 833MHz
- + Wireless keyboard
- + Optional USB peripherals
- + Operating voltage: 100-240V AC, 50-60Hz

Dimensions



Packaging



Note:
Packaging subject to change.

PEOPLE OF LAVA, SWEDEN AB

Box 2075, 444 02 Stora Höga, Sweden
phone +46 (0)303 79 80 90, fax +46 (0)303 79 79 70
www.peopleoflava.com

Note: Packaging, design and specs subject to change without notice.

PEOPLE
OF LAVA
SWEDEN